



Wrap-Around Services Pilot Project
with
Bellevue Public Schools
and
United Way of King County



Parks & Community Services
Board Presentation
July 12, 2005



Wrap Around Services

- The health, human service, and recreation programs for children and families that utilize schools as a focal point for communication, service delivery, and information and referral.
- Wrap-Around Services "round out" the academic curriculum, and are strategically integrated into the educational system through a model of collaboration between the School District, the City, and community organizations.

Clegg & Associates



History

- City of Bellevue and Bellevue Public Schools have been partners since early 1990's



Clegg & Associates

EXAMPLES:

- "It's About Time for Kids" and Community Schools Initiatives
- Facilities planning and renovation
- Ballfield scheduling



Using public schools as hubs, community schools knit together inventive, enduring relationships among educators, families, volunteers and community partners. By sharing expertise and resources, schools and communities act in concert to transform traditional schools into permanent partnerships for excellence.

Annie E. Casey Foundation

Clegg & Associates



What is the City's interest in quality schools?

- Excellence
- Prevention
- Public Expectation
- Neighborhood Strategy
- Common Mission



Clegg & Associates




Success Factors for School-Based Collaborations

- √ Focus on building trusting collaborative relationships
- √ Embrace a philosophy of partnership where power and responsibility are shared
- √ Design the program to fit specific needs of the school and its students and families
- √ Focus on key outcomes associated with student success ... improved achievement, attendance, behavior, and development

Clegg & Associates

Wrap Around Services

- Academic Enrichment
- Recreation
- Childcare
- Health
- Human Services
- Safety/Security



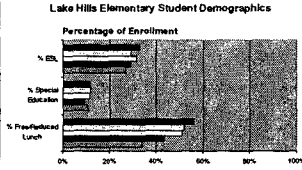
Clegg & Associates

Need for Services Increasing

The percentage of students for whom English is a second language, who are in Special Education classes, or who qualify for free/reduced school lunches, are all indicators of a potential need for services


Lake Hills Elementary Student Demographics

Percentage of Enrollment



	% Free/Reduced Lunch	% Special Education	% ESL
2004 - 2005	32.6%	11.2%	22.7%
2005 - 2006	31.8%	12.0%	29.2%
2006 - 2007	31.1%	11.6%	21.6%
2007 - 2008	43.2%	8.3%	28.2%
2008 - 2009	33.6%	10.7%	27.1%

Lake Hills School Current Users



Service Agencies
YES
SMH
ESL

Mentors
Volunteers

Academic Support
Math/Literacy
Tutoring

Recreation
BB&GC
Special Events

Parent & Adult Education Programs

Enrichment Clubs

SUN Schools ...

- Build a community of parents, neighbors, teachers, and school staff focused on education of children and support of families
- Are a center of community activity, not just a site for service delivery
- Have extended day programs that link with the school vision, curriculum, and teaching practices

Components of the Model

The SUN Model

- Advisory Committee
- Non-Profit Lead Agency
- Site Manager
- Need services contracted
- Academic Support
- Social Services
- Recreation



The Planners...

Oversight Committee

- Claudia Balducci, Bellevue City Council
 - Jan Still, Bellevue School Board
 - Chris Marks, Bellevue School Board
 - Dr. Mike Riley, Bellevue School District
 - Margaret Moore, United Way Board
 - Michael Yantis, United Way Board
 - Patrick Foran, City of Bellevue
 - Vicky Murray, Bellevue School District
 - Terry Higashiyama, City of Bellevue
 - Judy Buckmaster, Principal Lake Hills School
-
- Judith Clegg, Clegg & Associates



The Planners...

Work Group

- Judy Buckmaster, Principal Lake Hills School
 - Terry Higashiyama, COB/Parks
 - Dr. Donald Felder, Casey Family Programs
 - Doug Whalen, United Way
 - Nell Garvin, BSD Lead Nurse
 - Jean Vrbka, BSD School Counselor
 - Patricia Knight, COB/PCD-Neighborhood Programs
 - Officer Tom Baker, COB/Police
 - Alex O'Reilly, COB/Human Services
 - Carla Miranda, COB/Human Services
 - Helena Stephens, COB/Recreation
-
- Judith Clegg, Clegg & Associates

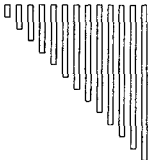
OReilly, Alexandra

From: Karen Howell-Clark [KHowellClark@uwkc.org]
Sent: Tuesday, July 12, 2005 8:13 AM
To: rbeem@ci.shoreline.wa.us; peterb@pgafoundations.com; michael@seattlefoundation.org; Jane.Campbell@METROKC.GOV; kathy.carson@metrokc.gov; duiv300@dshs.wa.gov; HidanEK@dshs.wa.gov; KJohnson@ci.kent.wa.us; omdalpa@dshs.wa.gov; Leslie, Emily; carol.maurer@metrokc.gov; patricia.mcinturff@seattle.gov; OReilly, Alexandra; kathpierce@comcast.net; gregs@gatesfoundation.org; jim.street@Seattle.Gov; Kip.Tokuda@ci.seattle.wa.us; Billie.Young@Seattle.Gov; auerbach@childcare.org; burriga@dshs.wa.gov
Cc: Marlene Rapues; susansc@gatesfoundation.org; MAMT@dshs.wa.gov; Barbara.Pelfrey@Seattle.Gov; mary.shaw@Seattle.Gov; Harla.Tumbleson@Seattle.Gov; Ed Hutchinson
Subject: WRONG DATE GIVEN FOR AUGUST Funders' Alliance for Children & Youth Meeting
Importance: High

My apologies for sending you the wrong date for the August meeting in my e-mail last Friday.

The next meeting is **Tuesday August 9, 3:00-5:00** in the Gates Room at United Way (not Aug. 2). Please make sure you have the correct date in your calendar. The group meets regularly on the second Tuesday of the month from 3:00-5:00 in United Way's Gates Community Room at 720 Second Ave., Seattle.


Karen Howell-Clark
Community Impact Manager
United Way of King County
720 Second Ave., Seattle, WA 98104
(206) 461-8463 - phone
(206) 461-8495 - fax
<mailto:khowellclark@uwkc.org>



**City of Bellevue
Parks & Community Services**


**Bellevue Senior Council
Project**

Parks & Community Services Board
Presentation
July 12, 2005



**Bellevue Senior Services
Mission Statement**

To support activities and services that enhance the quality of life for our older citizens. We encourage ideas and activities that support life-long learning, independence, health, and a sense of self worth.



Project History

- ◆ In 2004, staff completed the Senior Service Review Project as part of the Recreation Plan update. The purpose of this project was to:
 - Assess the social, recreation, education, and human service programs provided to seniors in Bellevue by all providers
 - Identify gaps in service
 - Retool the services provided by Bellevue Parks & Community Services Department
 - Better meet the needs of current and future seniors in Bellevue



Project History (cont)

- ◆ The Vision 2009 document identifies the top priority strategies and recommendations for serving Seniors in the next five years.
- ◆ Strategy 5 calls out the concept of the development of a Senior Council.
- ◆ The Senior Council Project team was formed in January 2005.



Project Team

Staff: Terry Higashiyama
Cathy VonWald
Helen Spadoni

Committee: Howard Katz
Betty-May Coburn
Ran Dunnell
Ted Branstetter
Pauline Besch



Project Steps

1. Information Gathering
2. Development of By-Laws, organizational chart, and project timeline
3. Identification of expertise and liaison positions on the Senior Council
4. Development of application process

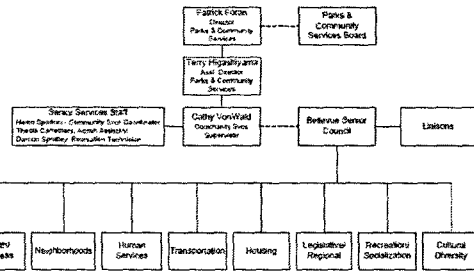


Purpose

The purpose of the Bellevue Senior Council is to support the mission of Bellevue Senior Services through advocacy, regional collaboration, and community involvement with a unified voice.




Bellevue Senior Council Organizational Chart






Documents

- ◆ Project Summary
- ◆ By-Laws
- ◆ Organizational Chart
- ◆ Application
- ◆ Application Process Plan



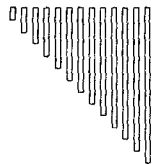
2005 Project Timeline

- ◆ Jan-April Development of Senior Council format
- ◆ May Department approval
- ◆ July Park Board presentation to seek input and feedback
- ◆ Sept-Oct Application & selection process
- ◆ Nov Orientation & training



Next Steps

- ◆ Recruitment & Application Process
- ◆ Selection of Members
- ◆ Orientation & Training
- ◆ First Meeting – January 2006



Questions
